



College of
Arts & Sciences
UA Theatre & Dance

Marian Gallaway Theatre

A CHORUS LINE

One. Singular. Sensation.



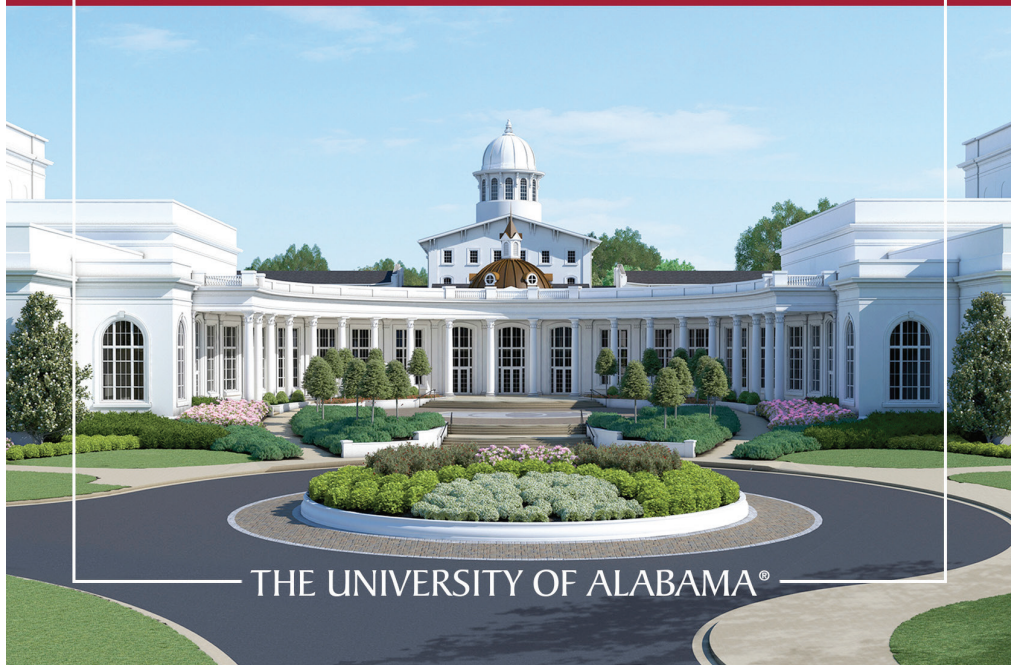


OUR NEXT ACT IS ABOUT TO BEGIN

A NEW HOME FOR THE ARTS IS COMING
AND YOU'RE GOING TO WANT A FRONT ROW SEAT.



U A . E D U / P E R F O R M I N G A R T S



THE UNIVERSITY OF ALABAMA®

MARIAN GALLAWAY THEATRE

April 18 - 23, 2017

A Chorus Line

CONCEIVED BY
Michael Bennett

BOOK BY
James Kirkwood and
Nicholas Dante

MUSIC BY
Marvin Hamlisch

LYRICS BY
Edward Kleban

COSTUME DESIGNER
Aharon Thomas

COSTUME DESIGNER
Molly Akin-McKinley

TECHNICAL DIRECTOR
Justin Mosher

SCENIC DESIGNER
Charles Moncrief

LIGHTING DESIGNER
Emily Phillips

SOUND DESIGNER
Russell McKinley

PROPS MASTER
*Andy Fitch

STAGE MANAGER
Amanda Manos

DANCE CAPTAIN
Rex Glover

DIRECTOR/CHOREOGRAPHER

†Stacy Alley



† Denotes the Director and Choreographer are members of Stage Directors and Choreographers Society, an independent national labor union.



*Denotes the Scenic Designer is a member of United Scenic Artists, the national union for stage designers.

A Chorus Line

Setting: A Broadway Theatre, 1975



Grace Arnold



Catherine Bradwell



Jonathan Bryant



Victor Castro



Emma Cooper



Peyton Davis



Blair Ely



Craig First



Daniel Fobes



Sandra Gates



Rex Glover



William Green



Carli Hardon



Daniel B. Hulsizer



Chip Keebaugh



Megan Kelly



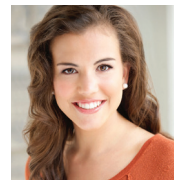
Bailey Blaise Mariew



Maggie McCowns



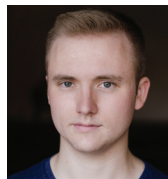
Desmond Montoya



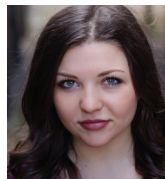
Melaina Rairamo



Parker Reeves



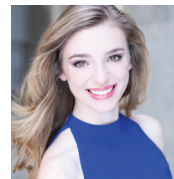
Jack Skeeane



Allie Stewart



Marissa Swanner



Callie Walker

CAST

Zach

Larry

Mike

Al

Greg

Bebe

Mark

Kristine

Sheila

Judy

Don

Val

Bobby

Richie

Maggie

Paul

Connie

Diana

Cassie

Tricia

Lois

Vicki

Roy

Frank

Barbara

UNDERSTUDIES

Cassie

Maggie & Diana

Val & Bebe

Connie & Judy

Sheila & Kristine

Al, Greg, Don, & Zach

Mike, Mark, Bobby, & Paul

WILLIAM GREEN

REX GLOVER

JONATHAN BRYANT

DANIEL FOBES

CHIP KEEBAUGH

SANDRA GATES

DESMOND MONTOYA

BLAIR ELY

BAILEY BLAISE MARIEA

MEGAN KELLY

PEYTON DAVIS

GRACE ARNOLD

DANIEL HULSIZER

VICTOR CASTRO

CALLIE WALKER

CRAIG FIRST

ALLIE STEWART

CARLI HARDON

MELAINA RAIRAMO

CATHERINE BRADWELL

EMMA COOPER

MARISSA SWANNER

JACK SKEEAN

PARKER REEVES

MAGGIE MCCOWN

MEGAN KELLY

CATHERINE BRADWELL

EMMA COOPER

MARISSA SWANNER

MAGGIE MCCOWN

JACK SKEEAN

PARKER REEVES

PRODUCTION ASSTS. AND CREW

Asst. Director

NAOMY AMBROISE

Asst. Stage Manager

KATELYN WORSHAM
BAYLEE WALTERS

Asst. Company Manager

MARTINE MCLELLAN

Asst. Sound Designer

CHRISTOPHER SPENCER

Asst. Lighting Designer

JACOB OLSON

Lightboard Operator

LANDON TURNER

Asst. Technical Director

JORDAN BOHL

Follow Spot Operator

RILEY RAWSON
KYLE VAN FRANK

Props Crew

JACKIE KAMIN
MATT KELLEY
JOSEPH ARRIGO

Run Crew

DARIA SPENCER
ROSS BIRDSONG
STEVEN CARINI

Costume Dressers

ALLY BRYANT
CAROLINE FIRST
JENNIFER GIANGARRA
MEGAN HILL
MACY LADNER
EMMA WAGNER

Costume Maintenance

PEYTON DAVIS
KACEY TANVEER

Costume Stitchers

DANIEL B. HULSIZER
CASEY FOGLEMAN
KENNEDY PICKARD
ANNIE YONGE
JONATHAN BRYANT

DIRECTOR'S NOTES



A classic piece of musical theatre with an interesting history, *A Chorus Line* has been the subject of several documentaries and books (as well as an unfortunate film version). The show examines the world of professional dancers and enables those unfamiliar with this world to see their struggles from a universal perspective.

In its documentary authenticity (via monologues and montages), *A Chorus Line* was the precursor to reality shows, giving the audience a chance to be a voyeur into these people's lives. As a result, it revolutionized the entire scene for chorus dancers by bringing them into the spotlight as well as requiring them to be "triple threats". An honest portrayal and pure celebration about the lives of performers, *A Chorus Line* is ultimately about growing up and allowing ourselves to be vulnerable -- things with which we can all identify. We each have a human need -- to be wanted, and to be accepted. And we all have dreams which, in a sense, requires us to put ourselves on the "line". Therefore, I hope it is the heart of the show and the people in it that we most successfully convey with this production.

Please note: As I have done with other shows known for their iconic direction and/or choreography, I have tried to pay homage to Michael Bennett's work while allowing myself some creative freedom, with the ultimate goal being to highlight the strengths and talents of our particular cast while respecting the integrity of the original production.

-Stacy Alley, Director/Choreographer

A poster with a red curtain background and a yellow and black border. At the top, the text "Alpha Psi Omega" is written in a large, white, glowing font. The letter "A" has a gorilla silhouette to its left, "Psi" has a banana to its left, and "O" has a blue party hat to its right. Below this, "Gamma Gamma Cast" is written in a yellow, cursive font. Underneath that, the phrase "is proud to support our friends," is written in a white, cursive font. The main title "UA THEATRE & DANCE" is in large, bold, black, block letters. At the bottom, there are two lines of small white text: "Alpha Psi Omega is a Theatre Honor Society dedicated to the advancement of theatrical arts here at The University of Alabama." and "APO strives for academic success, community betterment through outreach and service to West Alabama AIDS Outreach, and celebration of Theatre at all levels."/>

Alpha Psi Omega
Gamma Gamma Cast
is proud to support our friends,

**UA THEATRE
& DANCE**

Alpha Psi Omega is a Theatre Honor Society dedicated to the advancement of theatrical arts here at The University of Alabama.
APO strives for academic success, community betterment through outreach and service to West Alabama AIDS Outreach, and celebration of Theatre at all levels.



SUMMERTIDE *theatre*

SMOKE ON THE MOUNTAIN

June 2 - 30, 2017

Tuesday-Sunday 8PM

George C Meyer Performing Arts Center

visit [www. summertime.org](http://www.summertime.org) for tickets



College of
Arts & Sciences
UA Theatre & Dance

CAST

WILLIAM GREEN (Zach) is a second year MFA Acting candidate from Mobile, AL. Previous UA credits include *Ghosts* (Jacob Engstrand), *Young Frankenstein* (The Monster) and *Tartuffe* (Cleante). Other credits include: *Jekyll & Hyde* (Jekyll/Hyde), *Man Of La Mancha* (Quixote), *To Kill A Mockingbird* (Atticus), *City Of Angels* (Stone), *Clybourne Park* (Russ), *The Secret Garden* (Archibald), *All The King's Men* (Willie) and *Twelfth Night*.

REX GLOVER (Larry/Dance Captain) is a Senior Musical Theatre and Dance major from Powder Springs, GA. Previous UA credits include *Hamlet* (Laertes) and *The Countess of Storyville* (Dance Captain). Other credits include *A Chorus Line* (Greg/Asst. Choreographer) and *Little Shop of Horrors* (Ensemble) at The Huron Playhouse. He's thankful this is his last show at UA!

JONATHAN BRYANT (Mike) is a Sophomore from Huntsville, AL and is so thrilled to perform in *A Chorus Line*. Previous UA credits include *Young Frankenstein*, *Dance Alabama*, and *Dance Collections*. He thanks Stacy, his family, and God for blessing him so much!

DANIEL FOBES (AI) is a Freshman Musical Theatre and Dance double major from Kennesaw, GA. This is his UA acting Debut! Other Credits include *ARDT*, *DA!*, *Pippin*, and *All Shook Up*. He is excited to perform as AI and hopes you enjoy the show!

CHIP KEEBAUGH (Greg) is a Freshman Musical Theatre and Dance double major from Alpharetta, GA. He was most recently Rhys's understudy in *Appropriate*. He thanks Stacy, Raphe, and Terry for all the hard work they put into this show and for giving him the opportunity to stand on the line!

SANDRA GATES (Bebe) is a Senior Musical Theatre major from Madison, AL. Previous UA credits include *42nd Street* (Ensemble) and *The Countess of Storyville* (Ensemble) Other credits include *All Shook Up* (Lorraine) and *High School Musical* (Sharpay). She thanks God, her family, and the amazing instructors at the University.

DESMOND MONTOYA (Mark) is a Sophomore double major in Musical Theatre and Dance from Maryville, TN. He has been seen in past *Alabama Repertory Dance Theatre* and *Dance Alabama!* concerts at UA. *A Chorus Line* is his UA acting debut!

BLAIRELY (Kristine) is a Junior from Lexington, KY double-majoring in Dance and Psychology. She has performed most recently in UA's *ARDT* "Swan Lake" as Odette, and she is very involved in *Dance Alabama!*. This is her UA acting debut! She thanks her family and friends for their love and encouragement.



505 HARGROVE RD EAST
SUITE 10
PHONE: (205)764-9756

[FACEBOOK.COM/COMICSTRIPTUSCALOOSA/](https://www.facebook.com/comicstriptuscaloosa/)

CAST

BAILEY BLAISE MARIEA (Sheila) is a Senior Musical Theatre major from Jefferson City, MO. Previous UA credits include *Hamlet* (Gertrude), *The Countess of Storyville* (Sweet Emma Lou), *Merrily We Roll Along* (Meg), *Young Frankenstein* (Ensemble), and *42nd Street* (Ensemble). Other credits include *Oliver!* (Charlotte), and *Funny Girl* (Emma). Many thanks to Stacy and the cast!

MEGAN KELLY (Judy/Cassie U/S) is a Junior, Musical Theatre major from Columbia, MO. Her previous UA credits include *Falsettos* (Trina), *The Countess of Storyville* (Little Nell/Ensemble), and *42nd Street* (Gladys/Ensemble). Other Credits include Red Mountain Theatre Company's *The Little Mermaid* (Atina/Carlotta/Ursula U.S.) and Arrow Rock Lyceum Theatre's *The Music Man* (Ensemble). She thanks Stacy Alley for this amazing opportunity and her wonderful parents for their constant love and support.

PEYTON DAVIS (Don) is a Junior Musical Theatre major from Huntsville, AL. Previous UA credits include *Falsettos* (Whizzer/Choreographer), *Young Frankenstein* (Dance Captain) and *42nd Street* (Ensemble). Other credits include *Texas the Outdoor Musical Drama* (Dancer). Peyton thanks his friends and family for their never ending love and support.

GRACE ARNOLD (Val) is a Freshman from Marietta, GA. This is her UA acting debut! She graduated from Cobb County's Center for Excellence in the Performing Arts as a dance major and vocal/drama minor. There she played Miss Sandra in *All Shook Up*. She is so excited to be a part of this amazing cast and show!

DANIEL HULSIZER (Bobby) is a Senior Musical Theatre major from Florence, AL. UA Credits include *Falsettos* (Mendel), *Young Frankenstein* (Igor), *Merrily We Roll Along* (Charley), *Arcadia* (Ezra Chater), *42nd Street* (Ensemble). Other Credits include *Mary Poppins* (Park Keeper/ Von Hussler), *The Little Mermaid* (Ensemble/ Chef Louis u/s). Special thanks to Prof. Raphe Crystal for the countless work he has given UA and the brilliance he's shared with his students.

VICTOR CASTRO III (Richie) is a Senior Musical Theatre major from Mobile, AL. Previous UA credits include *The Countess of Storyville*.

EVENTS • LUNCHEONS • TAKE-OUT SERVICES



The University Club

www.universityclub.ua.edu  

JOIN TODAY!

call: 205-348-4849
email: UCEVENTS@UCLUB.UA.EDU

CAST

CALLIE WALKER (Maggie) is a Sophomore Musical Theatre major from Birmingham, AL. This is her UA acting debut! She is excited to be performing one of her dream shows with this talented cast. "Thank you to my family and friends for supporting me in all of my endeavors." Dream Big Dreams.

CRAIG FIRST (Paul) is so excited and humbled to finish his college career with *A Chorus Line*. Favorite roles include Jack (*Into the Woods*), Link Larkin (*Hairspray*), and Chip Tolentino (*Spelling Bee*). In July, he will be setting sail to sing and dance on Norwegian Cruise Line's ship the Pride of America! He thanks his family and cast mates for their love and friendship through this beautiful process.

ALLIE STEWART (Connie) is a Freshman Musical Theatre major from Atlanta, GA. This is Allie's UA theatre debut! Previous credits include *Thoroughly Modern Millie* (Millie), *Peter Pan* (Tiger Lily), *Legally Blonde* (Brooke Wyndham), and *Crazy For You* (Tess). Allie thanks UA Theatre & Dance for making *A Chorus Line* possible.

CARLI HARDON (Diana) is a Junior Musical Theatre major from Atlanta, GA. Previous UA credits include *Eurydice* (Loud Stone) and *Young Frankenstein* (Ensemble). Other credits include *The Marvelous Wonderettes* (Missy), *The Music Man* (Maud Dunlop) and a proud vagabond of Flat Rock Playhouse. Carli thanks her amazing parents for everything.

MELAINA RAIRAMO (Cassie) is a Freshman Musical Theater major. She is thrilled to be making her UA theatre debut! Last semester Melaina participated in *Dance Alabama!*. Minneapolis theater credits include *A Christmas Carol* (Chorus), *Wizard of Oz* (Dorothy), *Carousel* (Dancer), *Oklahoma!* (Chorus), and *Aladdin* (Jasmine). She thanks UA Theatre & Dance for this amazing opportunity and hopes everyone enjoys the show!

CATHERINE BRADWELL (Tricia/ Maggie & Diana U/S) is a Sophomore Musical Theatre major from Montgomery, AL. Previous UA credits include *The Marvelous Wonderettes* (Swing). Other credits include *The Marvelous Wonderettes* (Betty Jean), *The Wizard of Oz* (Dorothy), and *Sander's Family Christmas* (Denise).

EMMA COOPER (Lois/ Val & Bebe U/S) is a Sophomore double major in Dance and Public Relations. Emma has performed in *ARDT*, *Dance Alabama!*, and *Dance Collection*. She's thrilled to make her musical debut in *A Chorus Line*! She thanks her parents for their love and support!

MARISSA SWANNER (Vicki/ Connie & Judy U/S) is a Freshman Musical Theatre and Dance double major from Huntsville, AL. This is Marissa's UA acting debut! Marissa thanks Stacy for the opportunity to share the stage with such wonderful talents, and she looks forward to the next three years in the department.

MAGGIE MCCOWN (Barbara, Sheila & Kristine U/S) is a Freshman Musical Theatre and Dance double major from Kennesaw, GA. Previous UA credits include *Dance Alabama!* and *Alabama Repertory Dance Theatre*. She is thrilled to be making her Marian Gallaway Theatre debut! She feels incredibly blessed to work with such an amazingly talented cast and crew.

JACK SKEEAN (Roy/ Al, Greg, & Don U/S) is a Freshman Theatre major from Atlanta, GA. This is his UA acting debut! Other credits include *Music Man*, and *Guys and Dolls*. Jack sincerely thanks Stacy Alley and Raphael Crystal for this amazing opportunity, and he looks forward to his upcoming years at UA.

PARKER REEVES (Frank/ Mike, Mark, Bobby & Paul U/S) is a Sophomore majoring in International Studies and Musical Theatre from Trussville, AL. Other UA credits include *Falsettos* (Jason Understudy.) He is very thankful for the support of his friends, family, and professors.

Gaineswood

Where Drama Begins.

Demopolis, Alabama

Daily Tours except Monday

gaineswood.org for ticket and time information

Call (334) 289-4846

Featured in "Great Houses of the South"
published by Rizzoli New York.

*A National Historic Landmark and property
of the Alabama Historical Commission with
support from The Friends of Gaineswood.*

Photo by Art Meripol



Theatre
TUSCALOOSA
In Cooperation with Shelton State Community College



Book by Terrence McNally
Music by Stephen Flaherty, Lyrics by Lynn Ahrens
Based on the novel *Ragtime* by E.L. Doctorow

The hope and promise of the American dream is coursing through the veins of turn-of-the-century New York City in this 1998 Tony-Award-winning musical. The inspiring stories of an upper-class wife who unexpectedly becomes a single mother, a determined Jewish immigrant and his daughter, and a daring, young Harlem musician, are masterfully woven together as the original melting pot is on the verge of boiling over.

AUDITION: April 22 & 23, 2017

SEASON 2016-2017 205.391.2277
theatretusc.com

MANDERSON GRADUATE SCHOOL OF BUSINESS IS

Now Casting

FOR THE FOLLOWING ROLES:

DRIVEN & TALENTED CREATIVES

NON-BUSINESS MAJORS

INTERESTED IN CAREER ADVANCEMENT

MBA / MFA THEATER MANAGEMENT
MASTER OF SCIENCE IN MARKETING

culverhouse.ua.edu/graduate-programs | 205-348-6517

THE UNIVERSITY OF
ALABAMA

Culverhouse
College of Commerce
Manderson Graduate School of Business

*Show Starts
August 2017!*



Floral Arrangement Generously Provided by

R. Taylor Designs

Ray Taylor- Event Planner

205.310.8800

rtaylor designs@earthlink.net

Make your next event
CENTER STAGE

with *R. Taylor Designs*



PRODUCTION STAFF

†**STACY ALLEY (Director/Choreographer)** is Associate Professor of Musical Theatre /Dance at The University of Alabama as well as a professional director and choreographer whose recent credits include work at Baardar Academy in Norway, the Edinburgh Fringe Festival in Scotland, the Festival Internacional de Teatro y Danza in Chile, Forestburgh Playhouse in NY, and SummerTide Theatre in Gulf Shores (*The Marvelous Wonderettes*, *Ring of Fire*, *All Shook Up*). Recent UA directing/choreography credits include *Young Frankenstein*, *42nd Street*, *Urinetown*, and *Chicago* as well as several pieces in *Alabama Repertory Dance Theatre* concerts. Stacy has been performing professionally for over thirty years, including five years as a featured dancer in Radio City Music Hall's Christmas Spectacular. She is a member of the Southeastern Theatre Conference, the Stage Directors and Choreographers Society, the Alabama Conference of Theatre, and is Vice President of the Musical Theatre Educators Alliance International. She holds an MFA in Acting from The University of Alabama, a BA in Theatre from the University of Southern California, and is a Certified Movement Analyst through The Laban/Bartenieff Institute of Movement Studies in NYC.

RUSSELL MCKINLEY (Sound Designer) is a third year MFA Design & Technical Theatre candidate from Fort Worth, TX. He spent this past summer working at Arrow Rock Lyceum Theatre and three summers at Texas Shakespeare Festival.

EMILY PHILLIPS (Lighting Designer) is from Pacific Grove, CA. Previous UA credits include *Arcadia* (Lighting Designer), *The Countess of Storyville* (Assoc. Lighting Designer), *Young Frankenstein* (Lighting Designer), *42nd Street* (Asst. Lighting Designer), *Eurydice* (Lighting Designer), *Merrily We Roll Along* (Assistant Lighting Designer) and *Urinetown: The Musical* (Asst. Lighting Designer). She has also worked at The Santa Fe Opera as a Lighting and Electrics Apprentice.

JUSTIN MOSHER (Technical Director) is a second year MFA Design & Technical Theatre candidate from Terrell, TX. Previous UA credits include: *Boeing Boeing* (Technical Director), *Ghosts* (Technical Director), *Young Frankenstein* (Technical Director) and *Tartuffe* (Asst. Technical Director).

AMANDA MANOS (Stage Manager) is a Senior Theatre major from Tuscaloosa, AL. Previous UA credits include *Falsettos* (Stage Manager), *Boeing Boeing* (Stage Manager), *The Countess of Storyville* (Asst. Stage Manager) and *Young Frankenstein* (Stage Manager). She thanks everyone who has helped advance her theatre journey.

MOLLY AKIN-MCKINLEY (Costume Designer) is a third year MFA candidate with an emphasis in Costume Design. *A Chorus Line* marks her exiting design credit here at UA. Previous UA design credits include *Boeing Boeing* and *ARDT*. Other credits include *Trainer*, *Falling*, *The Idea of Absence*, *Today is History*, *El Dorado*, *Twenty-twenty*, and *Giselle Act II*.

AHARON THOMAS (Costume Designer) is a second year MFA candidate. She has designed many shows at UA but *A Chorus Line* has proven to be a dream show for her. Aharon has recently become an applicant of the Theatrical Wardrobe Union 764 in New York City. She is a year out from graduation and cannot wait to get her career started in the theatre world. Special thanks to Molly for her lovable spirit, and to God and his beautiful universe for pushing out nothing but her unique creativity. She loves her beautiful niece Ayla who is such a light and last but not least she loves her chocolate lumps aka MOMMIE.

CHARLES MONCRIEF (Scenic Designer) is a Third Year MFA Design & Technical Theatre candidate from Birmingham, AL. Previous UA credits include *Appropriate* (Scenic Designer), *Doubt* (Scenic Designer), *Equivocation* (Scenic Designer), *Seduced* (Scenic Charge), *UA Writes: Student-Written One Acts* (Scenic Designer), *Eurydice* (Scenic Charge) and *Merrily We Roll Along* (Props Designer). Other credits include SummerTide Theatre's *Ring of Fire* (Scenic Designer).

PRODUCTION STAFF

***ANDY FITCH (Props Master)** has been working as a professional scenic designer and educator since 1991. In the early part of his career Andy worked extensively in corporate special events, designing dozens of commercial events for ShowCo in Dallas. Since 1996 Andy has led the MFA program in Scenic Design at The University of Alabama. Some favorite designs throughout his career include: *The Color Purple*, *Legally Blonde*, *Hairspray*, *The Drowsy Chaperone*, *The Producers*, *The Sound of Music*, *The Drawer Boy*, *Betrayal*, *The Grapes of Wrath*, *Cinderella*, *Beauty and the Beast* and *Forever Plaid*. Andy is a founding member of the acclaimed Kitchen Dog Theatre in Dallas where he won the Rabin award (Dallas) for his scenic design for *Fool for Love*. Andy's training includes an MFA from Southern Methodist University in Dallas where he studied with noted stage designers William and Jean Eckart.

MARTINE MCLELLAN (Assistant Company Manager) is a Junior Theatre major from Milton, GA. Previous UA credits include: *Lend Me a Tenor* (Asst. Stage Mgr.), *Twelfth Night* (Asst. Stage Mgr.), *UA Writes: Student-Written One Acts* (Asst. Stage Mgr.), *Young Frankenstein* (Asst. Stage Mgr.) and *Ghosts* (Stage Manager).

F. RANDY DECELLE (Production Manager) is responsible for technical direction and production operations with the department. He also teaches graduate and undergraduate courses in traditional and technology based topics . He serves as Director of Graduate Studies for the department. Most recently, he served as Technical Director for the department's production of *The Countess of Storyville*. Other UA Technical Direction credits include *Tartuffe*, *Lend Me a Tenor*, *Picnic*, and *Seven Guitars*. Recent professional work has included serving as Technical Designer for visual artist and choreographer Ralph Lemon's world premiere of *Scaffold Room*. He worked professionally with Fisher Technical Services in Las Vegas, Nevada as the Head of Electrical Design, responsible for automation design on projects such as: Celine Dion's *Return to Las Vegas*; *Shrek the Musical* at Drury Lane Theatre, London; and he managed automation design for projects including *The World of Color* and *Cars Land* at Disney's California Adventure Park; and *Spider-Man Turn Off the Dark* on Broadway. He also served at the University of Illinois at Urbana-Champaign serving as the Chair of Scenic Technology. He is an active member of the United States Institute of Theatre Technology and serves on the Tech Expo Committee. He is a member of the Southeastern Theatre Conference, the Institute of Electronic and Electrical Engineers, and the Editorial Board for Southern Theatre Magazine. Randy holds a Bachelor of Electrical Engineering from Auburn University and a MFA from The University of Alabama.

THEATRE POLICIES

- | | |
|------------------------|---|
| Refunds & Exchanges: | No refunds or exchanges. |
| Photography/Recording: | The video and/or audio recording of this performance by any means is strictly prohibited. |
| Cell Phones: | Please turn off all electronic devices. |
| Snacks: | No food or drink allowed in the theatre. |



Productions, LLC



PORFIRIO SOLORZANO, PHOTOGRAPHER

Specializing in:

ARCHITECTURE

COMMERCIAL

EDITORIAL

HEADSHOTS

porfirio@mygracephoto.com

www.mygracephoto.com 205.792.5192

SCHOLARSHIP CONTRIBUTIONS

Benefactors

Allen Bales Memorial Fund
Edith Barnes Endowed Scholarship
T. Earle and Francis Johnson Fund
Society for the Fine Arts Gift Fund- Dance
Society for the Fine Arts Gift Fund- Theatre
John Ross Theatrical Design Scholarship
Clark West Endowed Scholarship Fund
Ed Williams Endowed Scholarship in Theatre Education

Diamond (\$5000+)

Pikes Peak Community Foundation

Platinum (\$1000+)

Alpha Lambda Delta
Dr. Edith Barnes
Mrs. Jessica Clare Comas
Mr. & Mrs. James E. Hedgspeth, Jr.
Jim & Daphne McMullen
Seth Panitch
Linda L. & Robert Shumilas
Dianne & Bill Teague

Gold Stars (\$500+)

Alpha Psi Omega,
John & Mary Burke
Mr. Thomas Parks Davis
Linda Dobbins
Fran & Jack Jecen
Ralph & April Lane
Pamela J. McCollough
Dr. Richard M. Snow, MD
Lauren Wilson & Andy Fitch

SCHOLARSHIP CONTRIBUTIONS

Silver (\$100+)

Chester & Suzanne Alexander	John & Pamela Hisey	Janet & Norvin Richards
Bernie Atkinson	Kenneth Lichstein	Mr. William James Roemer
Joan & Jon Atkinson	Susan & Steven P. Lindamood	Camille Samples
Sheri T. Andro	Richard Light LeComte	Ana Schuber
Joan Barth & David Boles	John Lochman	Vera Serrano
Hillyard Beans	Paul & Susan Looney	John Paul Snead
Dr. Joe & Beverly Benson	LeNa & Lyndell McDonald	Snow Sleep Center
Paula Berry	Michael J. Mendle	Caroline Spillane
Larry Bowen	James Merrell	Dr. & Mrs. Warren Spruill
Ian Brown	Mark Nelson	Charles Starling
Neil & Christine Dietsch	Charlotte Nix	Linda Steele
David Dixon	Don Noble	Alice Taylor
Fidelity Charitable	Marilyn O'Brien	James & Wendy Tucker
Joyce Fendley	Linda & Terry Olivet	John & Patricia Valleroy
William Gantt	Mara McKay	Vanguard Charitable
Kathleen C. Grigsby	Dalana Moore	Endowment
Bob Halli	Michael & Jill Picone	Louise Videau
H. Scott & Nita Hestevold	Dr. H Mark & Karen Reynolds	Dr. Ed Williams
Monterey Hiatt	Michael Wayne Rhiney	Joyce & Louis Clyde
Allie B. Hill	Sherida Rice	Whetstone Jr.
Madeline Hill		Corrine Yonge

Bronze Star (\$25+)

Dr. Lynne Adrian	Diane Hutton	Lacey T. Sharpe
Patricia Aiken	Joanna Jacobs	Linda Smith
Glynda Allison	Jamie D. Johnson	Stephen Spratlin
Lyndon D. Arnold	Chip Keebaugh	Melissa M. Steele
Janice Baldwin	MacKenzie Kilpatrick	Elizabeth Thiel
Stephen F. Beaty	Watson Lewis	Kip Tyner
Thomas Craven	Deborah Luke	Dr. Julie Vaughn
Jacob T. Dennis	Janie Lyda	Stewart Veltman
Rona Donahoe	Colleen McFarland	Mary Kay Webb
Miriam D. Dufer	Jennifer McMurray	Asia Webber
Debora P. Ficken	Virginia McPhearson	Jeffrey Weiss
Tanya Fratto	Michael Malinconico	
Julie Friedman	Lillian Martin	
Dr. Memorie Gosa	Georgia Milton	
Janis Helton	Shonda Milton	
Allison B. Hetzel	Lisa Gerios-Rohl	
Thomas Hunter	Stephanie Shamblin	

Support the arts and
promote your business!



To partner with UA Theatre & Dance or purchase ad space in our upcoming playbills, contact Emma Schenkenberger at ekschenkenberger@crimson.ua.edu

You are cordially invited to our talkback, Friday, April 21st!

Come hear about the creative process behind bringing *A Chorus Line* to the stage! The cast and crew will be taking questions and talking about their experiences with the show.

This event is free and open to the public.



Reception food generously donated by



The one and only
MISS DOTS
Since 2015

FACULTY AND STAFF

Chair

BILL TEAGUE
Department Chair

Administrative Staff

NANCY CALVERT
Office Associate Sr.

SHARRON SKIPPER
Administrative Secretary

Acting

ALLISON HETZEL
Acting/Voice

SETH PANITCH
Acting

KELLEY SCHOGER
Acting/Stage Movement

History/Directing

DR. STEVE BURCH
Theatre History/Playwriting

Directing/Stage Mgmt

ANNE LEVY
Directing/Stage Management

Dance

SARAH M. BARRY
Modern/Choreography

CORNELIUS CARTER
Director of Dance

QIANPING GUO
Ballet

LAWRENCE JACKSON
Jazz

LYNDELL T. MCDONALD
Technical Supervisor

REBECCA SALZER
Modern

RITA SNYDER
Ballet/Modern/Anatomy

JOHN VIRCIGLIO
Adjunct Dance Faculty

Arts Management

WILLIAM GANTT
Patron Services Mgr.

DOMINIC YEAGER
Arts Management

Musical Theatre

STACY ALLEY
Musical Theatre/Dance

RAPHAEL CRYSTAL
Director of Musical Theatre

EMILY HERRING
Vocal Instruction

DR. WILLIAM A. MARTIN
Director of Vocal Instruction

TERRY MOORE
Staff Pianist

Design & Production

JACKI ARMIT
Costume Technology

F. RANDY DECELLE
Technical Direction

ANDY FITCH
Scenic Design

JEANETTE LACKEY
Scenery Studio Supervisor

DONNA MEESTER
Costume Design/Production

TODD ROBERTS
Costume Shop Manager

GRADUATE ASSISTANTS

Molly Akin-McKinley, Tom Alsip,
Naomy Ambrose, Ian Andersen, Clifton Baker,
Jordan Bohl, Eryn Brooks, Raines Carr,
Kyle Chesney, Cecilia Gutierrez,
William Green, Morgan Chare'ce Hall,
Andrew Haueter, Elizabeth Kirkland,
Chalise Ludlow, Tim Lytle, Britt Mahan
Russell McKinley, Charles Moncrief

Justin Mosher, Morgan Ozenbaugh,
Meghan L. Pearson, Ryan Rankin,
Chelsea Reynolds-Nicholson, Katie Ritchie,
Emma Schenkenberger, Jamie Schor, Mae Seay,
Cynthia Spitko, Kati Stankovich, Zach Stolz,
Aharon Thomas, David Trump,
Justin Williams and Yue Zhao

SPECIAL THANKS



SCHOLARSHIP SPOTLIGHTS



Carli Hardon is a Junior Musical Theatre major and recipient of the Ed Williams Scholarship.

"This scholarship has helped me focus more on my performing and becoming the performer I dream of being."

"Thank you to my amazing parents for always believing in me and doing everything in their power to help me grow and follow my dreams. I love you with all of my heart.

Thank you to my sister for leading me to this profession and helping through all of its turns. Also for being the best big sister ever. And also taking me to see *Hamilton*.

And thank you to my brother for being my fan even though he hates musicals.

Thank you to my best friends (you know who you are), for the love, laughter, tears, vines and memes.

Thank you to APO for giving me another home and family at UA.

Thank you to Flat Rock Playhouse. There are no more words than just thank you for everything you gave me last summer. I am so proud to be a Vagabond.

Thank you to all of my teachers who have helped me to grow so much in my short time here. For always pushing me to becoming the performer I can be.

Thank you to Simba and Covu. I would like to acknowledge that *The Lion King* is the greatest Disney movie of all time."



Amanda Manos is a Senior majoring in Technical Theatre with a minor in Interdisciplinary Environmental Studies and recipient of a Theatre Gift Fund Scholarship.

"This Scholarship has allowed me to focus on my school work while receiving hands on learning experience as a stage manager.

Thank you to my family biological and chosen for continuing to push me to better myself as a stage manager and as a human being. "

**If you would like to donate,
please visit our website at theatre.ua.edu.**

Over the years, our donors have generously contributed to our Annual Scholarship Campaign providing scholarships for deserving Theatre & Dance students. We ask you to consider joining our family of donors who ensure UA Theatre & Dance continues to attract the brightest and best students.

2017 - 2018 Season

Allen Bales Theatre

We Are Proud to Present... 9/25-10/1

Spelling Bee 11/6-11/12

A Bright Room Called Day 2/26-3/4

I, Gelosi 4/9-4/15

Marian Gallaway Theatre

The Caucasian Chalk Circle 10/3-10/8

August: Osage County 11/14-11/19

Vinegar Tom 2/3-2/18

Sweeny Todd 4/17-4/22

Morgan Auditorium

ARDT 10/10-10/13

Dance Alabama! 11/7-11/10

ARDT 2/20-2/24

Dance Alabama! 3/27-3/31

For tickets or information:

Call (205) 348-3400 or visit theatre.ua.edu

Follow Us!

   @UATheatreDance

